

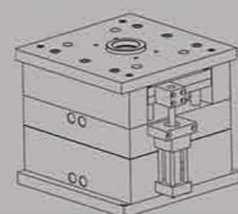
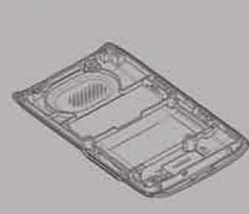
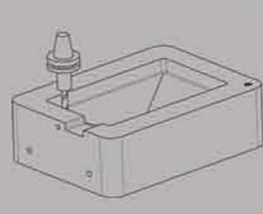
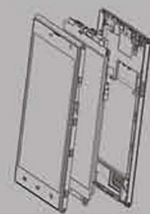


Injection Molding

Die Casting Mold

Product Assembly

IMD / IML



www.smartmoldtech.com

SMARTMOLDTECH LTD.

Factory Address : 1&6F, HuaWeiKeGu Industrial Park, DaLingShan Town, DongGuan City, GuangDong, China

E-mail: sales12@smartmoldtech.com

Mobile & WhatsApp: +86 159 9471 3546

www.smartmoldtech.cn



Founded in 1995, the factory of SMARTMOLDTECH is located in the national High-tech zone SongShan Lake industrial park, DongGuan, nearby Huawei. It covers 10000m² and we have 150 employees.

SMARTMOLDTECH is a leading manufacturer dedicated to mechanical engineering, CNC prototype, CNC machining, injection molding, aluminum/zinc alloy die casting, sheet-metal stamping, laser cutting and bending and finished product assembly.

Our product cover the fields of auto parts, new energy battery parts, machinery parts, auto LED light and accessories, music stand and retail equipment, communications electronics product, medical equipment, industrial product, household appliance and fitness equipment etc..

We will provide you the best service with a good price, high quality product, shortest delivery time, as well as the economical engineering solutions.



SMARTMOLDTECH成立於1995年，工廠位於東莞松山湖國家高新片區，占地面積2層10000平米，員工150餘人。公司致力於產品研發，CNC手板，CNC精加工，塑膠模具，鋁合金/鋅合金壓鑄，五金衝壓，鐳射切割與折彎，以及成品組裝。

我們的產品涵蓋汽車內外飾件，新能源電池配件，叉車尾板配件，工程機械配件，汽車LED燈以及配件，樂譜架以及零售設備，通訊電子產品，醫療設備，工業製品，家用電器，戶外用品以及健身器材。我們以最優的價格，高品質的產品，最快的交期以及最經濟的工程解決方案為你服務。

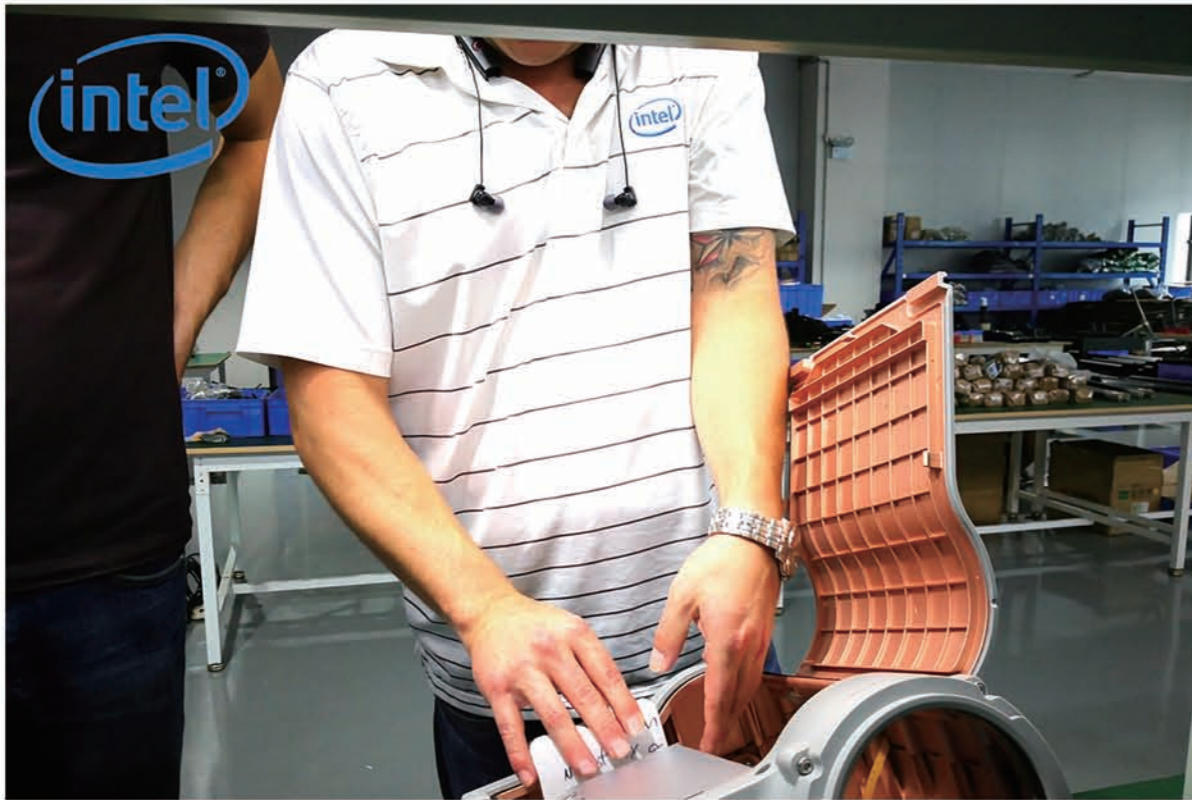
我們具有ISO9001:2018，公司檢測設備齊全：三次元（CMM），二次元，投影儀，老化測試儀，鹽霧測試儀，拉力測試儀，硬度儀以及IP5防水測試設備。

在過去的20年裡，我們為全世界的客戶提供生產加工服務，包括世界500強的Legrand, intel, Motorola 以及一些知名公司PDI(美國),Littelfuse(美國), Grammer(德國), Parrot(法國), Unikia(挪威), Cardo(以色列)。

We passed the ISO9001:2018. The equipment of testing is complete: CMM, Quadratic measurement, projector, aging tester, salt spray tester, hardness tester, tension tester and IP5 waterproof test equipment.

Over last 20 years, we have supplied services for many clients such as Legrand(USA), Intel(USA), Motorola(USA), PDI(USA), Littelfuse(USA), Grammer(Germany), Parrot(France), Unikia(Norway), Cardo(Israel), etc. all over the world.

We are looking forward to establishing a long-term cooperation, sharing the development prosperity and building a better future together with you.

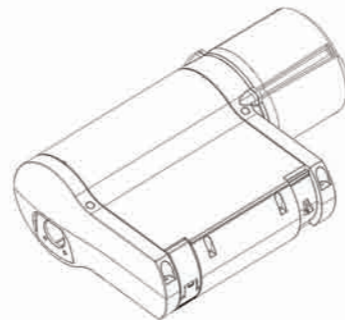


Stadium Camera

Our business cooperation with Intel group started from April 2014.
We spent a whole year to discuss the details such as the DFM report, finished product assembly, test, quote etc..

- 18 plastic molds,
- 2 stamping molds,
- 3 die casting molds,
- 4 die cut molds,

are done in 40 days. It takes 6 months to complete the project before mass production.



All the required test equipment are equipped in 2015 for this Stadium Camera
Product passes the rain test, free-fall test, temperature test and Corrosion test before delivery to Intel.

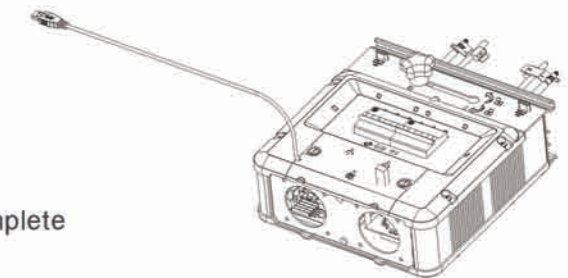


Data Center Controller

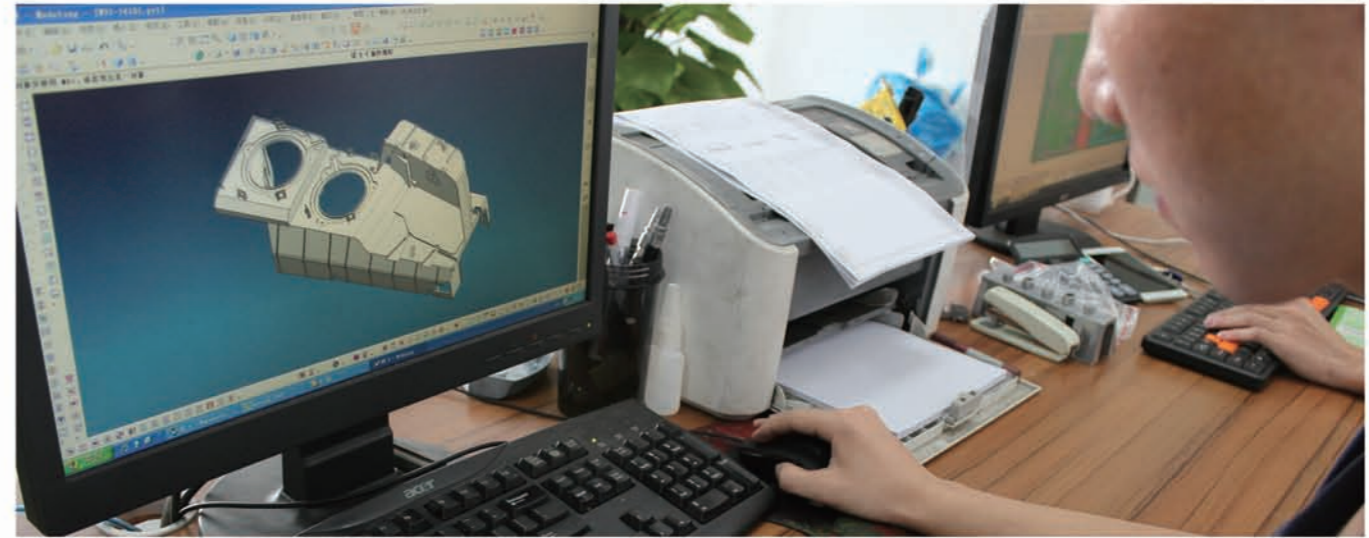
Our business cooperation with Legrand group started from May 2013.
We spent one and half a year to discuss the details such as the DFM report, finished product assembly, test, quote etc..

- 30 plastic molds,
- 5 stamping molds,
- 1 die casting mold,
- 3 silicone molds

are done in 50 days. It takes 4 months to complete the project before mass production.



Product passes the free fall test, temperature test and UL certificate before delivery to Legrand.
Final finished product has been continuously equipped in most data center in USA.



設計 Design:

我們能夠根據客人提出的概念完成產品設計。

we can design the product according to customer's idea



抄數 Reverse engineering:

我們能夠根據客人提供樣品進行抄數，並完全按照樣品提供客人3D和2D圖。

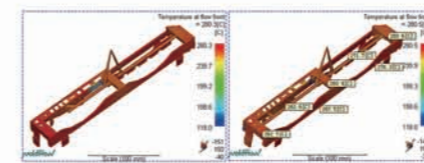
Reverse engineering for customers and provide the 2D/3D drawings



手板原型製作 Prototype making:

我們可以根據客人圖紙為客人提供CNC手板,3D列印手板,以及複模手板服務

Fast delivery for metal/plastic CNC and 3D printing prototype



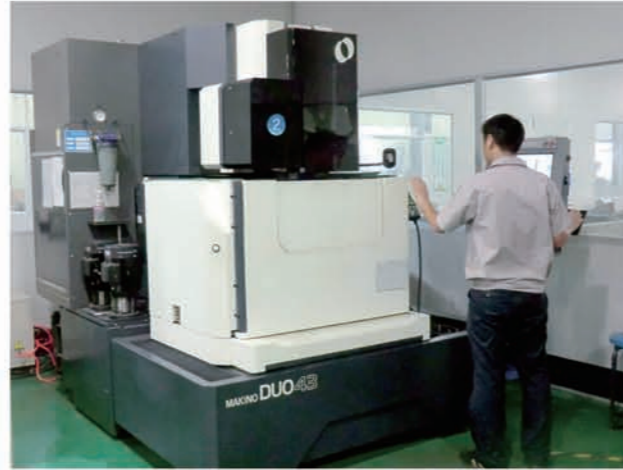
模流分析 MoldFlow analysis:

我們能夠對複雜零件在模具設計前進行模流分析，以優化模具結構。

Making the mold analysis of the complex products in order to optimize the mold design.



韓國大韓鏡面火花機
Korea Daehan EDM Machining Center



日本牧野慢走絲線切割機
Japan Makino Slow Wire Cutting Machine



瑞士夏米爾高精度慢走絲線切割機
Swiss Charmilles Precision CNC WEDM Machine



瑞士米克朗高速數控加工中心
Swiss Mikron High speed CNC Machining Center



日本牧野鏡面火花機
Japan Makino EDGE 3S Sinker EDM Machine



日本牧野高速數控加工中心
Japan Makino High-speed Machining Center



注塑車間 Plastic Injection Workshop

注塑車間擁有65台注塑機，大小從50T到1600T不等。其中包括7台雙色機，2台立式注塑機多合。每台注塑機均配有機械手，同時也配有上料機，很大程度上減小了員工的勞動強度。
Equipped with 65 sets injection machines, the tonnage from 50T to 1600T, including 7 sets two-color injection machines and 2 sets vertical injection machines. We equipped robot hand and appending machine on each injection machine to reduce the labor force and improve the production efficiency.

加工中心車間 CNC Machining Center Workshop

公司擁有米克朗-Mikron高速機，日本牧野高速數控中心共15台，以及最大規格為2米的台灣加工中心。
Equipped with 15 sets CNC machines, including Swiss Mikron high-speed CNC, and Japan Makino high speed CNC. The biggest TaiWan CNC machine can processes on 2 meters products.

EDM車間 EDM Workshop

公司擁有13台夏米爾-Charmilles鏡面火花機，大韓機，臺灣機共8台；夏米爾-Charmilles鏡面慢走絲，中走絲，細孔放電機共5台。
Equipped with 13 sets EDM machines, including CHAARMILLES mirror EDM, DAEHAN and Topedm mp-50, HAARMILLES mirror WEDM, WEDM-MS and pore EDM.



壓鑄車間 Die Casting Workshop

壓鑄車間有6台壓鑄機，規格從150T-800T不等，其中4台鋁合金壓鑄機，2台鋅合金壓鑄機。
 材料選擇：ADC12, A380; Zamak-2, Zamak-5
 Equipped with 4 sets aluminum alloy and 2 sets zinc alloy die casting machines, the tonnage from 150T-800T.
 Material option: ADC12, A380; Zamak-2, Zamak-5



模具品質控制

1. 模具設計管理
2. 鋼料硬度檢測
3. 電極檢測
4. 前後模鋼料尺寸檢測
5. 裝模前檢測
6. 試模樣板全尺寸檢測報告
7. 裝箱前最終檢測

Mold Quality Control Process

1. Design control
2. Steel hardness inspection
3. Electrodes inspection
4. Core and cavity steel dimension inspection
5. Pre-mould installation inspection
6. Trial report and samples inspection
7. Pre-shipment final inspection

成品組裝 Finished Product Assembly

我們擁有5條先進的組裝線，在管理人員的專業領導下，我們組裝線的同事認真仔細的做好品質掌控、測試、包裝以及最終出貨的每一個細節。我們的專業與經驗，為我們贏得品質好，交期快的良好口碑。
 Our experience engineers and managers control every detail from packaging to the finished product.
 Our professional experience and on-time delivery bring a good reputation and positive feedback from customers.



後處理 Post-Treatment

噴油，絲印，UV，PVD，移印，超聲波焊接，電鍍，鐳雕，氧化等
 Various post-treatment are available in SMARTMOLDTECH including oil painting, silk screen printing, UV coating, PVD pad printing, ultrasonic welding, electroplating, laser engraving and anodization etc..



OEM semi-finished and finished Medical injection molding product



Automotive injection molding parts



High quality 2K/Double Injection molding parts



POS/Security OEM injection molding product



OEM/ODM air purifier, filter, vacuum cleaner injection molding



Aluminum and zinc alloy die casting parts



模具制造设备 Tooling Development Machinery				
名称 Item	制造商 Manufacturer	产地 Origin	行程 Stroke(mm)	数量 Qty
高速数控加工中心 High Speed CNC Machining Center	米克朗 Mikron	瑞士 Swiss	850x530x600	1
高速数控加工中心機 CNC Milling Machining Center	牧野 Makino	日本 Japan	650x500x450	1
高速数控加工中心機 CNC Machining Center	麗偉 Well Head	台湾 Taiwan	850x500x540	3
数控加工中心機 CNC Machining Center	科挺 Fagor	中国 China	500x400x200	1
数控加工中心 CNC Machining Center	丽驰 LITZ	中国 China	400x400x200	2
北京精雕 Carver-400G	北京精雕	中国 China	400x400x300	1
镜面火花機 EDM Machining Center	大韓 Daehan	韓國 Korea	500x400x350	2
镜面火花機 EDGE 3S Sinker EDM	牧野 Makino	日本 Japan	2-2: 350x250x100 2-3: 650x450x200	2
火花機 TOP EDM Machine	台一 Topedm	台湾 Taiwan	450x350x200 DF655	9
自動数控電火花小孔加工機 CNC EDM Drilling Machine Drill 20	夏米爾 Charmilles	瑞士 Swiss	300x200x300	1
高精度慢走絲綫切割機 Precision CNC WEDM Machine	夏米爾 Charmilles	瑞士 Swiss	350x250x250	2
慢走絲綫切割 Slow Wire Cutting Machine	慶鴻 Chmer	台湾 Taiwan	450x350x200	1
慢走絲綫切割 Slow Wire EDM Machine	牧野 Makino	日本 Japan	500x400x200	1
CNC深孔鑽 CNC Deep Hole Drilling Machine	WT-800	中国 China	800x800x800	1
旺馨磨床機 Grinding Machine	旺馨 Hybest	台湾 Taiwan	300x150x250	6
合模机 Top Box Closing Machine	适意 AQUAmate	中国 China	LS-120-1310	1
石墨机 Graphite machine	倍速特 BEST	中国 China	650	1

二次加工设备 Component Finishing Machinery	
名称 Item	数量 Qty
恆輝單、雙色移印機 Henghui Single & Bio-Padding Machine	11
精鋒超聲波機 Jingfeng Ultrasonic Machine	5
10萬級無塵噴油綫 100,000 Grade Oil Spraying Line	1
組裝綫 Assembly line	4
絲印機 Silkscreen Machine	>200
北京精雕(雙頭 高速 CNC模具加工) Carving further processing machine	11
自动冲孔机 Auto punching machine	11

注塑设备 Injection Machinery		
名称 Item	型号 Model	数量 Qty
東洋全電注塑機 TOYO Fully Electric Injection Molding Machine Si-Five	SI-100Vcs	5
伊之密注塑機 YIZUMI Injection Machine	UN120SJ	5
東華注塑機 DONGHUA Injection Machine	TTI-130	6
伊之密注塑機 YIZUMI Injection Machine	UN-160SJ	5
海天機械 HAITIAN Machinery	HTF-160	5
東華注塑機 DONGHUA Injection Machine	TTI-160	5
日精注塑機 MISSEI IMECTION MOLDING Machine	NE180EV-IIIIT	8
住友注塑機 SUMITOMO Injection Machine	SE180EV-FT	5
東華注塑機 DONGHUA Injection Machine	TTI-190	5
東華注塑機 DONGHUA Injection Machine	TTI-260	2
伊之密注塑機 YIZUMI Injection Machine	UN260SM	2
東華注塑機 DONGHUA Injection Machine	TTI-380	3
東華注塑機 DONGHUA Injection Machine	TTI-650	1
伊之密注塑機 YIZUMI Injection Machine	800A2-SM	1
海天雙色注塑機 HAITIAN Double Molding Machine	IA2500II/b-J	2
海天雙色注塑機 HAITIAN Double Molding Machine	IA360II/b-J	2
機械手 Kinger Robot	HHM1-750B	64

检测设备 Inspection Machinery		
名称 Item	型号 Model	数量 Qty
三次元 Coordinate Measuring Machine	CROMA 686	1
二次元 Two-Dimension Measuring Instrument	SVW LITE 4030	2
	VMS-430G	
高度儀 Altimeter	TESA HITE 350	2
色差儀 Color Aberration Instrument	CR-10	1
標準光源箱 Standard Lamp House	T60	1
投影儀 Projector	VPL-EX130	2
	VPL-EX146	
顯微鏡 Microscope	ETX-E	1